

LODGE. ROOM.

HIGHLAND PARK
104 N. Ave 56, LA, CA 90042
www.lodgeroomhlp.com

A/V Tech Specs

Updated: Feb 2026

Production Information [PT. 1]

STAGE

Size: 24'w x 14'd (34" high) [7.3mW x 4.2mD]

Stage Wings: SR & SL - 10'x10' [3m x 3m]

Stage Access: Stage Left

Steel Deck Risers:

- 2x: 4'x6' (8'x6' Drum Riser)
- 1x: 3'x8' (DJ Table)

SOUND

PA:

- Mains: (4x) L'Acoustics ARCS II (2x per-side)
- Center Fill: (1x) L'Acoustics X12 Down Fill Speaker
- Subs: (2x) L'Acoustics SB28 (Under the Center of the Stage, "End Fire" Config)
- FOH Delay System: (2x) L'Acoustics 108P
- System Amplification: (2x) L'Acoustics LA8

FOH:

- Console: Yamaha CL3
- Stage Rack: Rio3224-D (32 in/16 outs/4 AES/EBU outs)

MONITORS:

- Console: Allen & Heath SQ-7
(MON Engineer on a Show-by-Show Basis; Pending Ticket Sales)
- Monitors: (6x) L'Acoustics X15-HiQ
(2x) L'Acoustics 112p (Powered Wedges)
 - *IEM Systems: Please see next page.*
- System Amplification: (3x) L'Acoustics LA4X
- Splitter: 32-Channel Analog Split

GUEST CONSOLES: If bringing in your own console, our guest position is located back left of house. Unfortunately, we cannot move this position since our bar takes up "FOH position". Our tie-lines into the PA are as follows...

- AES (L/R) (This is nonnegotiable in turning this into 2 separate lines)
- Center Fill
- Subs
- If your console does not have AES capabilities, we will need to run your console into our house desk.
- 1x: Shielded Cat5e available and dropped upstage right
- *Monitor Guest Consoles:* Please advance. We may be able to set up your world in either SR or SL; pending advance.

MULTITRACK RECORDING: We can offer multitrack recording for \$150. This amount will be deducted from settlement. If you would like to bypass this fee, you must bring in the following...

- Recording personnel w/ computer & DAW of choice
- Dante Virtual Soundcard & Dante Controller (Download [HERE](#))
- Dongle with ethernet connection

Production Information [PT. 2]

MICROPHONES

Shure:

- 4x: SM57
- 8x: SM58
- 1x: SM58s
- 4x: SM81
- 2x: SM27
- 3x: Beta52A
- 1x: Beta 91A
- 4x: Beta57A
- 4x: Beta58A

Sennheiser:

- 3x: e609
 - 5x: e604
 - 2x: MD421-II
- ### Audix:
- 1x: D6
 - 1x: i5
 - 1x: D4
 - 2x: D2
 - 3x: ADX51

sE Electronics:

- 2x: V7

Telefunken:

- 2x: M80

Radial ProDI Boxes:

- 2x: J48
- 1x: JDI Stereo
- 1x: ProD2 Stereo
- 2x: Pro AV2 Stereo
- 4x: ProDI Mono

RF/Wireless

Shure:

- ULXD4D Dual Channel Digital Wireless Receiver (G50: 470-534 MHz)
- 2x: ULXD2 Handheld Transmitter w/ SM58 Capsules

Sennheiser:

- 1x: AC41 Active Antenna Combiner
- 4x Transmitters: SR IEM G4 (A1: 470-516 MHz)
- 4x Beltpacks: EK IEM G4 (A1)
- *If using house IEMs, please inform us immediately. We **do not** provide earbuds with our units. Some fees may apply pending advance.*

LIGHTING

FOH:

- Console: GrandMA2 PC Version w/ Fader Command Wing
- Computer: Beelink SER5 Mini PC

INSTRUMENTS:

Elation:

- 2x: Proton 3K | 900-Watt LED Strobe
- 2x: CuePix Blinder WW4
- 2x: Fuze Profile CW
- 2x: Fuze Wash Z350

Martin:

- 6x: Rush MH5 Profile

Chauvet:

- 4x: Rogue R1 Beam
- 4x: Rogue R1 Wash
- 6x: Rogue R2X Wash
- 6x: Ovation E-190WW-26 Degree Lekos
- 4x: COLORado TriTour

Look Solutions:

- 1x: Unique 2.1 Hazer (No Fee)

GUEST CONSOLES:

- If bringing in your own console, our guest position is located back left of house.
- 3x: DMX Guest Lines for the Universes

No Flow Spots, Fog, Pyro, Smoke, or CO2 Tanks
Additional Fees May Apply for Fog/Smoke Machines

Production Information [PT. 3]

DJ GEAR

- 2x: Technics 1200MK7
- 2x: Pioneer CDJ2000 NXS2
- 1x: Pioneer DJM-900 NXS2

VIDEO

PROJECTOR:

- Barco G100-W16: 16K Lumen Projector
(1920x1200 – 16:10)
- 3x: HDMI Drops
 - o 1x: FOH
 - o 2x: Stage (SR)
(Stage drops are as follows: 1x HDMI [4k], 1x SDI [1080p])
- Screen:
 - o Motorized Projector Screen: 147.5" x 236"
(278" Diagonal – 16:10)

***RIGGING:** No points available, no weight may be added to existing trussing. All visiting production must be ground supported.

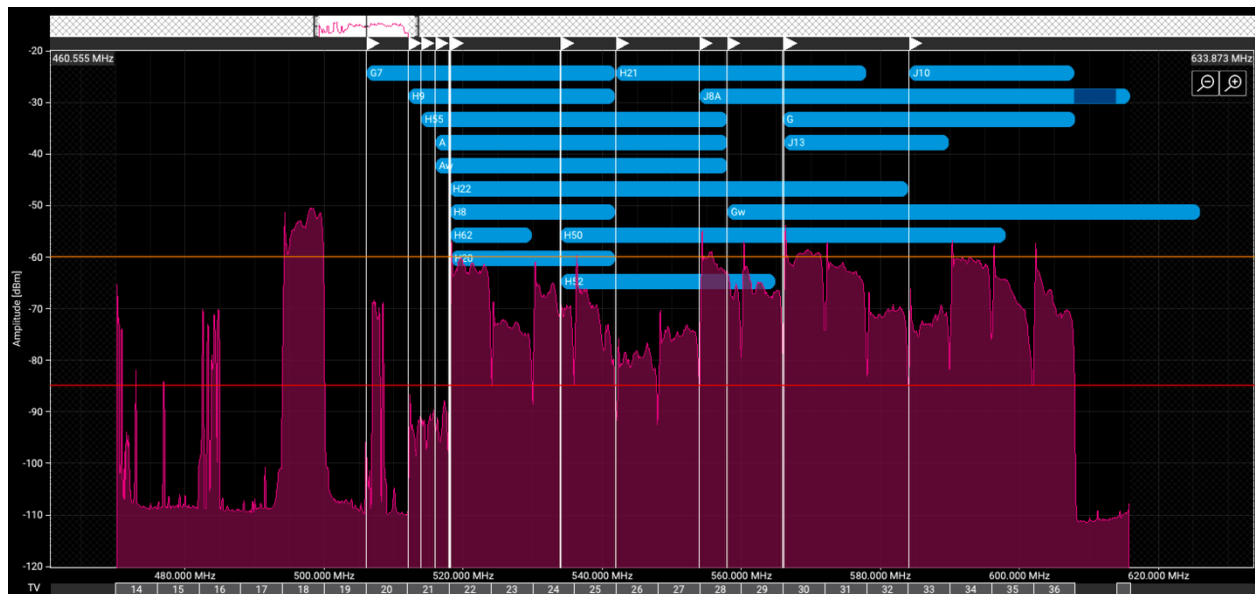
***POWER:** There is no additional power tie-in (3 phase etc.). Lighting power is shared with audio. If your ground package requires more power, a generator rental will be needed.

Please advance ASAP.

No Fly Systems

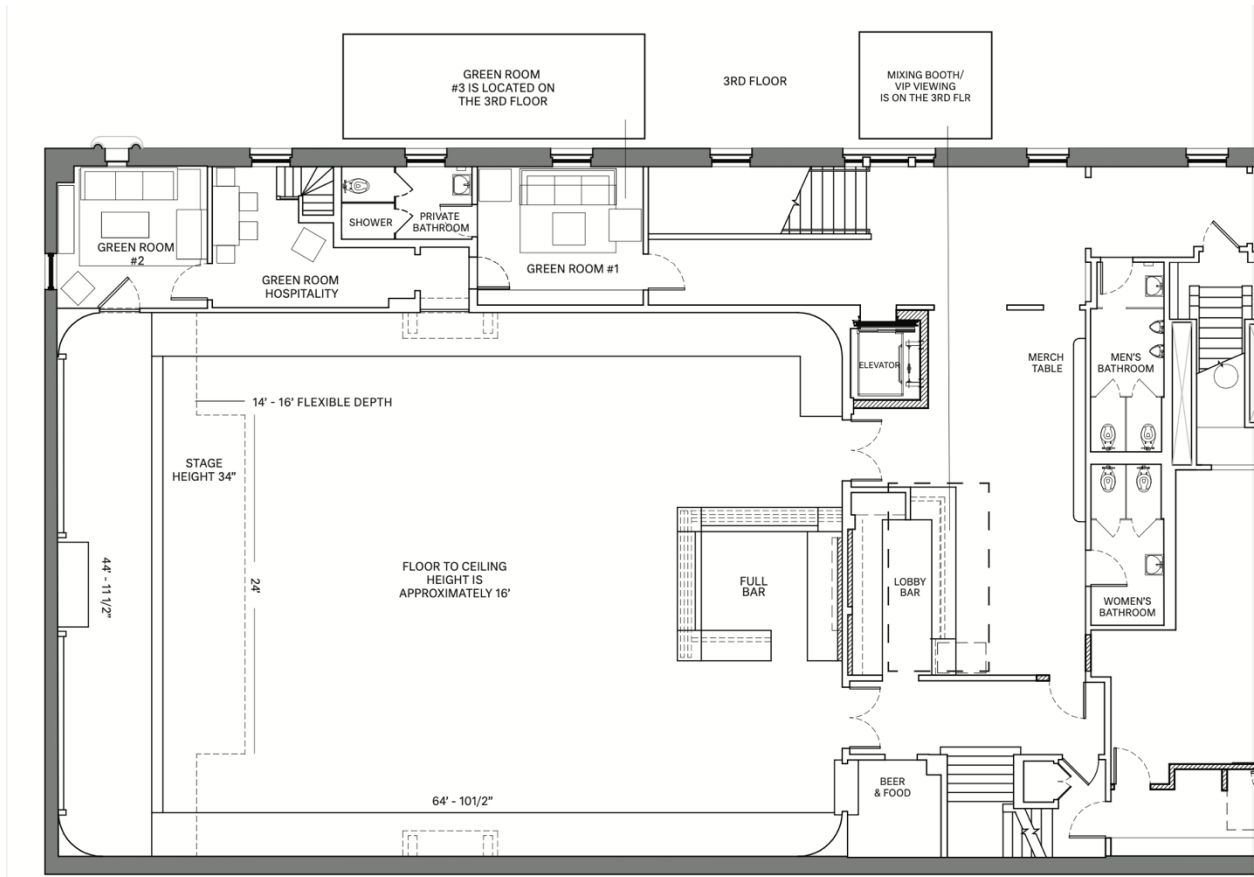
RF Information

- If bringing in IEMs/RF, the following frequency bands *do not work* properly in our area: *(Please send frequency bands ASAP)*
 - Shure:
 - PSM300: H62, H20, J13, J10
 - PSM900: G7 (spotty), H21
 - PSM1000: H22, J8A
 - ULXD (mics): H50, H52
 - SLXD/BLX (mics): H55, H9, H8
 - Sennheiser:
 - G4: G, B, A
 - A band will only have 1-2 freqs available
 - SR2050: Gw, Aw (spotty)
- We must source/rent the proper frequency if any of your RF equipment lands in the above bands. Below is a scan with all the problematic frequency ranges.

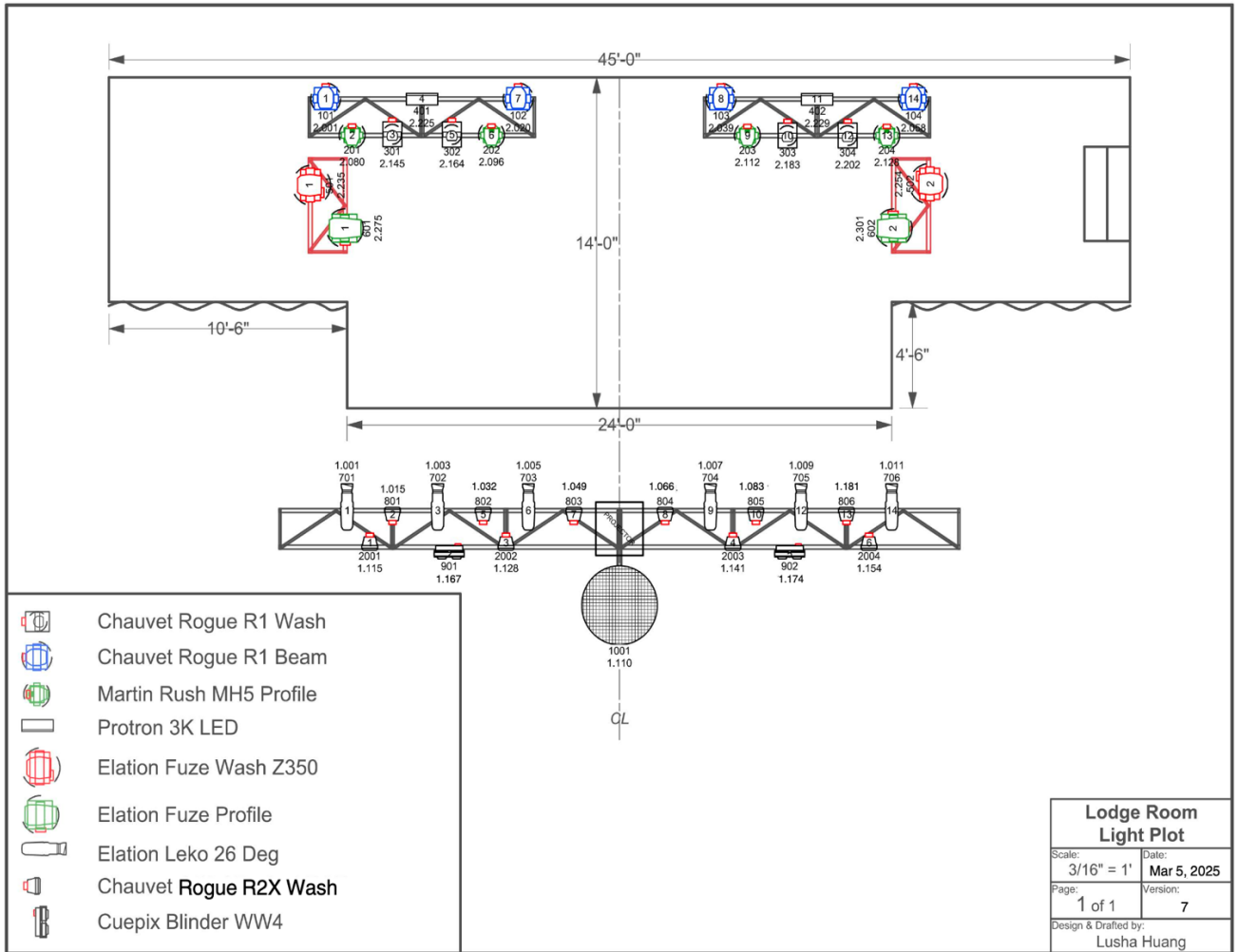


Updated Scan: Feb 2026

Floor Plan:



LIGHTING PLOT:



LIGHTING PATCH:

| FixID | Position | Fixture Type | Footprint | Patch |
|--------------|-------------------|--------------------------|------------------|--------------|
| 101 | USR Beam 1 | Rogue R1 Beam | 19 | 2.001 |
| 102 | USR Beam 2 | Rogue R1 Beam | 19 | 2.020. |
| 103 | USL Beam 3 | Rogue R1 Beam | 19 | 2.039 |
| 104 | USL Beam 4 | Rogue R1 Beam | 19 | 2.058 |
| | | | | |
| 201 | USR Spot 1 | Rush MH5 Profile | 16 | 2.080. |
| 202 | USR Spot 2 | Rush MH5 Profile | 16 | 2.096 |
| 203 | USL Spot 3 | Rush MH5 Profile | 16 | 2.112 |
| 204 | USL Spot 4 | Rush MH5 Profile | 16 | 2.128 |
| | | | | |
| 301 | USR Wash 1 | Rogue R1 Wash | 19 | 2.145 |
| 302 | USR Wash 2 | Rogue R1 Wash | 19 | 2.164 |
| 303 | USL Wash 3 | Rogue R1 Wash | 19 | 2.183 |
| 304 | USL Wash 4 | Rogue R1 Wash | 19 | 2.202 |
| | | | | |
| 401 | USR Strobe 1 | Protron 3K LED | 4 | 2.225 |
| 402 | USL Strobe 2 | Protron 3K LED | 4 | 2.229 |
| | | | | |
| 501 | SR Side Wash 1 | Fuze Wash Z350 | 19 | 2.235 |
| 502 | SL Side Wash 2 | Fuze Wash Z350 | 19 | 2.254 |
| | | | | |
| 601 | SR Side Profile 1 | Fuze Profile CW Standard | 26 | 2.275 |
| 602 | SL Side Profile 2 | Fuze Profile CW Standard | 26 | 2.301 |
| | | | | |
| 701 | DS Leko 1 | Ovation E-190WW DOS | 2 | 1.001 |
| 702 | DS Leko 2 | Ovation E-190WW DOS | 2 | 1.003 |
| 703 | DS Leko 3 | Ovation E-190WW DOS | 2 | 1.005 |
| 704 | DS Leko 4 | Ovation E-190WW DOS | 2 | 1.007 |
| 705 | DS Leko 5 | Ovation E-190WW DOS | 2 | 1.009 |
| 706 | DS Leko 6 | Ovation E-190WW DOS | 2 | 1.011 |
| | | | | |

| | | | | |
|-------------|-----------------|----------------------------------|----|----------|
| 801 | DS Frt Wash 1 | Colorado Rogue R2X Wash | 17 | 1.015 |
| 802 | DS Frt Wash 2 | Colorado Rogue R2X Wash | 17 | 1.032 |
| 803 | DS Frt Wash 3 | Colorado Rogue R2X Wash | 17 | 1.049 |
| 804 | DS Frt Wash 4 | Colorado Rogue R2X Wash | 17 | 1.066 |
| 805 | DS Frt Wash 5 | Colorado Rogue R2X Wash | 17 | 1.083 |
| 806 | DS Frt Wash 6 | Colorado Rogue R2X Wash | 17 | 1.181 |
| | | | | |
| 901 | DSR Blinder 1 | CuePix Blinder WW4 | 7 | 1.167 |
| 902 | DSL Blinder 2 | CuePix Blinder WW4 | 7 | 1.174 |
| | | | | |
| 1001 | DSC Mirror Ball | Generic Dimmer 16Bit | 2 | 1.110. |
| | | | | |
| 2001 | DS Mole 1 | Colorado 1 Tri Tour TR16 Classic | 13 | 1.115 |
| 2002 | DS Mole 2 | Colorado 1 Tri Tour TR16 Classic | 13 | 1.128 |
| 2003 | DS Mole 3 | Colorado 1 Tri Tour TR16 Classic | 13 | 1.141 |
| 2004 | DS Mole 4 | Colorado 1 Tri Tour TR16 Classic | 13 | 1.154 |
| | | | | |
| 3001 | Hazer | MasterFX Mystic | 3 | 3.510. |
| | | | | |
| 4001 | Floor PAR 1 | Colorado 1 Tri Tour TR16 Classic | 13 | 3.001 |
| 4002 | Floor PAR 2 | Colorado 1 Tri Tour TR16 Classic | 13 | 3.014 |
| | | | | |
| 5001 | Arch Bar 1 | Colorband T3 BT | 13 | 3.027 |
| | | | | |
| 6001 | Floor Spot 1 | Rush MH5 Profile | 16 | 3.060. |
| 6002 | Floor Spot 2 | Rush MH5 Profile | 16 | 3.076 |
| | | | | |
| 10001-10300 | LED Pixels | Generic RGB 8Bit | 3 | 69.001 - |