

**Main Contact Email:**  
[info@lodgeroom.com](mailto:info@lodgeroom.com)

Updated: Feb 2026

# Contacts:

## General Manager

Stephen Kaplan

Email: [stephen@lodgeroomhlp.com](mailto:stephen@lodgeroomhlp.com)

## Assistant GM

Lennon Stankavich

Email: [lennon@lodgeroomhlp.com](mailto:lennon@lodgeroomhlp.com)

## Talent Buyer

Eli Flasher

Email: [eli@lodgeroomhlp.com](mailto:eli@lodgeroomhlp.com)

## Production Manager

Raul Recendez

Email: [raul@lodgeroomhlp.com](mailto:raul@lodgeroomhlp.com)

## Marketing Director

Gabriela Luna Delgado

Email: [marketing@lodgeroomhlp.com](mailto:marketing@lodgeroomhlp.com)

## Venue Shipping Information:

If you are planning to send merch or anything in advance, please use the following format below to ensure your package gets delivered safely to our venue. Send tracking information to all the above contacts once it is shipped.

- Lodge Room
- (Your Band Name/TM/MGMT)
- ATTN: Raul Recendez/Stephen Kaplan
- 104 N. Ave 56<sup>th</sup>, 2<sup>nd</sup> floor  
Los Angeles, CA 90042

# Our History & Community Guidelines

- **History of Venue**

Completed in 1923, the 'Commercial/Renaissance Revival' style building served as Lodge 382 of the Free and Accepted Masons for sixty years. The original structure included retail shops on the ground floor with the lodge and banquet hall on the second floor. The original Lodge Room, with its cherry wood paneling, anaglypta wall coverings, and other details, has been restored and preserved and remains in use. It is now a namesake 500 capacity music venue, Lodge Room.

- **Safe Space Guidelines**

Lodge Room aims to provide a safe space that promotes respect and tolerance for all concertgoers. We want you to feel comfortable while having a great time.

We will not tolerate any unsolicited behavior, including but not limited to the following:

- Any form of sexism, transphobia, homophobia, racism or bigotry.
- Touching someone without their consent.
- Violence or aggression of any kind.
- Engaging with someone who has said they are *NOT* interested or has signaled a lack of interest.

If you feel unsafe or see that someone else does, please alert a venue staff member.

Let's respect each other and help keep live music a fun space for all.

# Parking – Directions – Load In & Loaders

- **Parking**

Parking is extremely limited around the area. There is no parking lot. We have a loading zone in front of the venue that is 60' (18m) long (yellow curb/reserved for headliners only). This can fit 3 normal-sized sedan/SUV vehicles. You can stay there for the remainder of the evening. If traveling in a tour bus/bandwagon, please inform us a minimum of 2 weeks in advance, so we can extend the parking situation and bag meters that extend into the loading zone.

- There is a paid meter parking lot across the street from the venue for extra parking, which costs \$2 for the whole night.

- **Tour Buses:** We ***DO NOT*** have shore power. Running the generator is okay.



- **Directions from the 110 Freeway**

- Exit Ave 52<sup>nd</sup>, make a left
- Make a right on Figueroa St.
- Make a left on Ave 56<sup>th</sup>. The venue will be the first door on the left-hand side.

- **If traveling with a tour bus or with trailers**

- Exit Ave 52<sup>nd</sup>, make a left
- Continue straight for 2 blocks, and make a right on Monte Vista St.
- Make a right on N. Ave 56<sup>th</sup>. The venue will be on your right-hand side, next to Avalon Vintage.

- **Load In & Loaders**

- There's an elevator in the main lobby that can help carry things up the stairs. The venue is on the 2<sup>nd</sup> floor. Our team for the night can help you load in. From the elevator is a ~75' (~22m) push to the stage.
- If you require more assistance with loading in, we can schedule loaders at \$40/hr. This may be added as a show cost or deduction, pending approval.

# Venue & Hospitality Information

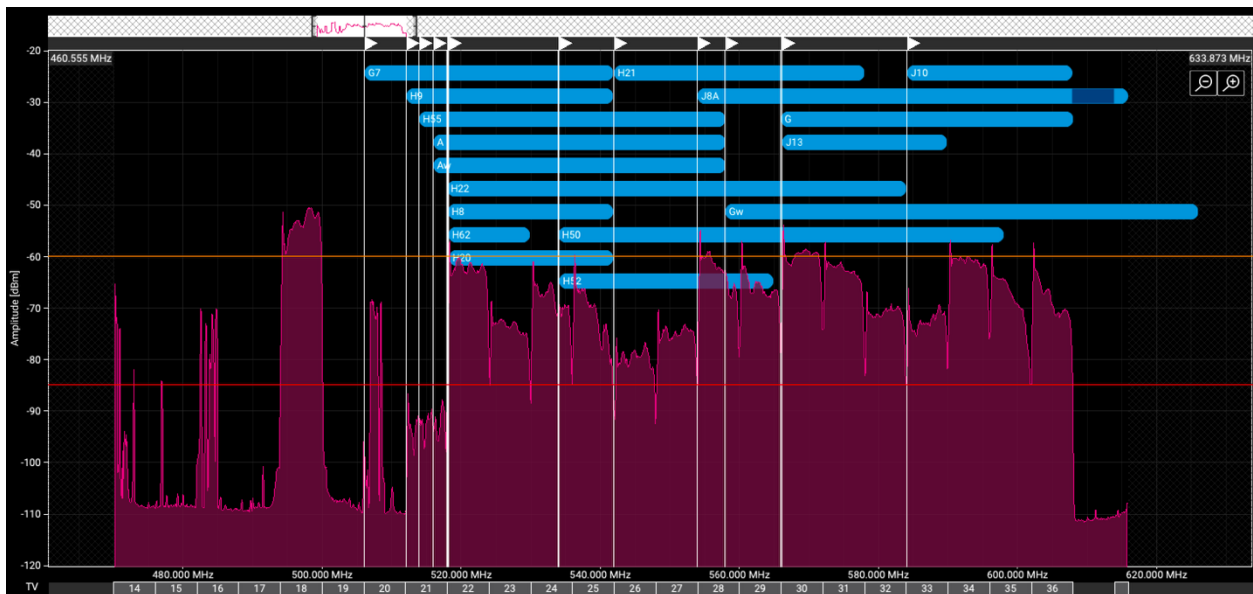
- **Capacity:** 500 – GA
  - 350: Hybrid Seating/Standing (160 seating)
  - 200: Fully Seated
- **Age Restrictions:** All ages unless noted otherwise
- **Decibel Limit:** No Limit. Please have a respectful limit for attendees at the venue.
- **Green Rooms:** We have 3 green rooms. A shared common space with coffee, tea kettle, water, and a full-length fridge is in the middle of backstage where hospitality will be posted.
  - **\*\*There is no production office\*\***
  - 1x: Bathroom & Shower
    - Green Room #1: This room is the main entry to backstage; some venue staff will be walking through.
    - Green Room #2: This has the stage entrance to stage left.
    - Green Room #3: This is upstairs and has more privacy. This area has a dining table, which can act as a production room. This room also acts as our venue office, some venue staff will be walking through.
  - Please talk to the DOS contact upon arrival if you have any questions or concerns about the green rooms.
- **NO LAUNDRY**
  - If laundry is needed, there are multiple options located around our venue.
- **BACKLINE:** We *do not* have any backline in-house besides DJ gear (see page 9). We can order backline for your show, if needed. All rentals are at artists' cost and deducted from settlement unless otherwise noted. If reaching out separately from us, there are a few backline vendor options located on page 14.
- **WiFi:**
  - Network: Lodge Room
  - Password: L0sangeles (the "o" is a zero)
- **CHECKER HALL:** We can offer a meal at our restaurant, Checker Hall for 25% off. If you would like to order from our restaurant, please place an order with the hostess at the front desk and mention that you are performing at Lodge Room. You can view the menu [HERE](#).

# Venue & Hospitality Information Continued

- **VISUALS & BANNERS:** If planning on using visuals, please advance this before your arrival. Depending on the aesthetics of your visuals, they tend to look better being projected against our wall instead of our screen. Our screen unfortunately makes you lose 2.5'-3' of stage space + 3/4<sup>ths</sup> of our lighting rig. We will use the screen if your visuals are intended to be "seen". If this decision can be made DOS, that would be best.
  - **Banners:** Our venue and trussing system isn't fit to hang any banners. There's a 4-5' gap in the middle of our upstage trussing which makes it difficult to tighten the middle of the banner. If you have a banner that you desire to hang, a high-res digital picture of your artwork can be projected on our stage.
- **PROPS:** Please advance any stage props or design.
  - **\*NOTE\*** - If bringing in any form of confetti (canons, tubes, etc.) will result in a \$300 cleaning fee, which will be deducted from settlement. This must be advanced and approved before arrival. Please, NO MYLAR! Mylar confetti stains our floors & ruins electronic components, please do not use mylar.
- **HOUSE PHOTOGRAPHER:** Please note that we have a house photographer shooting most of our shows for Lodge Room's social media pages. If we have a photographer scheduled for your show night, we can send the photos free of charge. Let us know if there are any concerns.
- **HOTELS:** We do not have any deals with hotels nearby. Our suggestion is to look near Downtown Pasadena/Los Angeles. Both of those areas are a 5-mile (8km)/ 15-20 min drive to our venue.
  - We recommend looking into [Arroyo Vista Inn](#). A restored craftsman home, originally built in 1910 and transformed into a charming B&B in 2006. Perched on a hillside, the Inn offers breathtaking views of the majestic San Gabriel Mountains.
- **MERCH:** Artist keeps 100%. If needed, we can provide a merch seller that you will pay \$20/hr for a minimum of 5 hours (\$100). They will arrive 1hr before doors and must be paid CASH at the end of the night. There is an 8' table, lights, and 2 grids to hang your items up. Our merch area is located in our lobby bar.
  - *We do not* have a POS or a square reader. Please provide a type of POS for our merch seller.
- **ELEVATOR DIMENSIONS:** 36"w x 80"h x 62"d

# RF Information

- If bringing in IEMs/RF, the following frequency bands *do not work* properly in our area: *(Please send frequency bands ASAP)*
  - Shure:
    - PSM300: H62, H20, J13, J10
    - PSM900: G7 (spotty), H21
    - PSM1000: H22, J8A
    - ULXD (mics): H50, H52
    - SLXD/BLX (mics): H55, H9, H8
  - Sennheiser:
    - G4: G, B, A (spotty)
      - A band will only have 1-2 freqs available
    - SR2050: Gw, Aw (spotty)
- We must source/rent the proper frequency if any of your RF equipment lands in the above bands. Below is a scan with all the problematic frequency ranges.



Updated Scan: Feb 2026

# Production Information [PT. 1]

## **STAGE**

Size: 24'w x 14'd (34" high) [7.3mW x 4.2mD]

Stage Wings: SR & SL - 10'x10' [3m x 3m]

Stage Access: Stage Left

Steel Deck Risers:

- 2x: 4'x6' (8'x6' Drum Riser)
- 1x: 3'x8' (DJ Table)

## **SOUND**

PA:

- Mains: (4x) L-Acoustics ARCS II (2x per-side)
- Center Fill: (1x) L-Acoustics X12 Down Fill Speaker
- Subs: (2x) L-Acoustics SB28 (Under the Center of the Stage, "End Fire" Config)
- FOH Delay System: (2x) L-Acoustics 108P
- System Amplification: (2x) L-Acoustics LA8

FOH:

- Console: Yamaha CL3
- Stage Rack: Rio3224-D (32 in/16 outs/4 AES/EBU outs)

MONITORS:

- Console: Allen & Heath SQ-7  
(MON Engineer on a Show-by-Show Basis; Pending Ticket Sales)
- Monitors: (6x) L-Acoustics X15-HiQ  
(2x) L-Acoustics 112P (Powered Wedges)
  - *IEM Systems: Please see next page.*
- System Amplification: (3x) L-Acoustics LA4X
- Splitter: 32-Channel Analog Split

**GUEST CONSOLES:** If bringing in your own console, our guest position is located back left of house. Unfortunately, we cannot move this position since our bar takes up "FOH position". Our tie-lines into the PA are as follows...

- AES (L/R) (This is non-negotiable in turning this into 2 separate lines)
- Center Fill
- Subs
- If your console does not have AES capabilities, we will need to run your console into our house desk.
  - 1x: Shielded Cat5e available and dropped upstage right
  - *Monitor Guest Consoles:* Please advance. We may be able to set up your world in either SR or SL; pending advance.

**MULTITRACK RECORDING:** We can offer multitrack recording for \$150. This amount will be deducted from settlement. If you would like to bypass this fee, you must bring in the following...

- Recording personnel w/ computer & DAW of choice
- Dante Virtual Soundcard & Dante Controller (Download [HERE](#))
- Dongle with ethernet connection

# Production Information [PT. 2]

## MICROPHONES

### Shure:

- 4x: SM57
- 8x: SM58
- 1x: SM58s
- 4x: SM81
- 2x: SM27
- 3x: Beta52A
- 1x: Beta 91A
- 4x: Beta57A
- 4x: Beta58A

### Sennheiser:

- 3x: e609
- 5x: e604
- 2x: MD421-II

### sE Electronics:

- 2x: V7

### Telefunken:

- 2x: M80

### Audix:

- 1x: D6
- 1x: i5
- 1x: D4
- 2x: D2
- 3x: ADX51

### Radial ProDI Boxes:

- 2x: J48
- 1x: JDI Stereo
- 1x: ProD2 Stereo
- 2x: Pro AV2 Stereo
- 6x: ProDI Mono

## RF/Wireless

### Shure:

- ULXD4D Dual Channel Digital Wireless Receiver (G50: 470-534 MHz)
- 2x: ULXD2 Handheld Transmitter w/ sE V7 Capsules (2x: SM58 capsules available)

### Sennheiser:

- 1x: AC41 Active Antenna Combiner
- 4x: Transmitters: SR IEM G4 (A1: 470-516 MHz)
- 4x: Beltpacks: EK IEM G4 (A1)
- *If using house IEMs, please inform us immediately. We **do not** provide earbuds with our units. Some fees may apply pending advance.*

## LIGHTING

### FOH:

- Console: GrandMA2 PC Version w/ Fader Command Wing
- Computer: Beelink SER5 Mini PC

### INSTRUMENTS:

#### Elation:

- 2x: Proton 3K | 900-Watt LED Strobe
- 2x: CuePix Blinder WW4
- 2x: Fuze Profile CW
- 2x: Fuze Wash Z350

#### Chauvet:

- 4x: Rogue R1 Beam
- 4x: Rogue R1 Wash
- 6x: Rogue R2X Wash
- 6x: Ovation E-190WW-26 Degree Lekos
- 6x: COLORado TriTour

#### Martin:

- 6x: Rush MH5 Profile

#### Look Solutions:

- 1x: Unique 2.1 Hazer (No Fee)

### GUEST CONSOLES:

- If bringing in your own console, our guest position is located back left of house.
- 3x: DMX Guest Lines for the Universes

**\*No Flow Spots, Fog, Pyro, Smoke, or CO2 Tanks\***  
**\*Additional Fees May Apply for Fog/Smoke Machines\***

# Production Information [PT. 3]

## DJ GEAR

- 2x: Technics 1200MK7
- 2x: Pioneer CDJ2000 NXS2
- 1x: Pioneer DJM-900 NXS2

## VIDEO

### PROJECTOR:

- Barco G100-W16: 16K Lumen Projector  
(1920x1200 – 16:10)
- 3x: HDMI Drops
  - o 1x: FOH
  - o 2x: Stage (SR)  
(Stage drops are as follows: 1x HDMI [4k], 1x SDI [1080p])
- Screen:
  - o Motorized Projector Screen: 147.5" x 236"  
(278" Diagonal – 16:10)

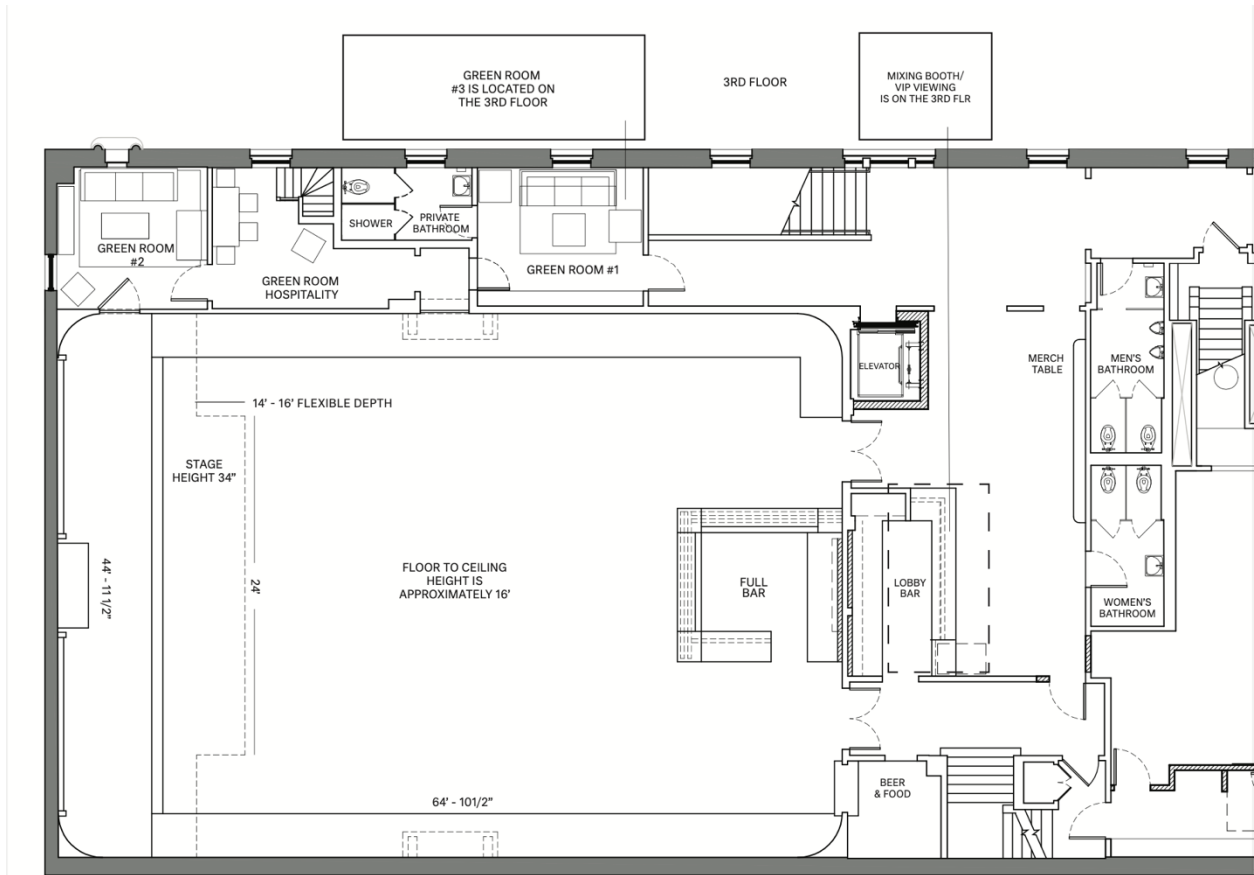
**\*RIGGING:** No points available, no weight may be added to existing trussing. All visiting production must be ground supported.

**\*POWER:** There is no additional power tie-in (3 phase etc.). Lighting power is shared with audio. If your ground package requires more power, a generator rental will be needed.

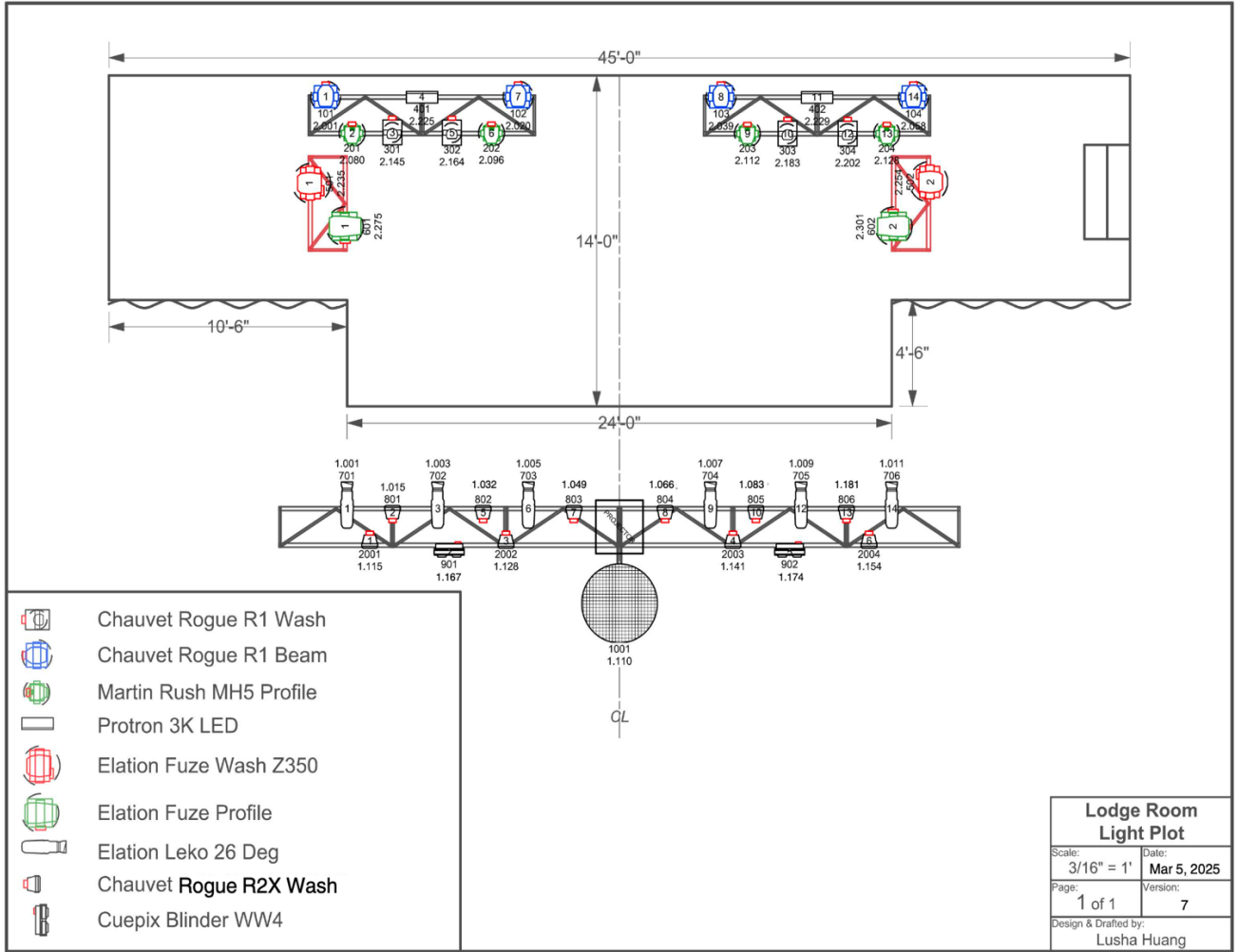
Please advance ASAP.

**\*No Fly Systems\***

**Floor Plan:**



# LIGHTING PLOT:



**LIGHTING PATCH:**

<b>FixID</b>	<b>Position</b>	<b>Fixture Type</b>	<b>Footprint</b>	<b>Patch</b>
101	USR Beam 1	Rogue R1 Beam	19	2.001
102	USR Beam 2	Rogue R1 Beam	19	2.020.
103	USL Beam 3	Rogue R1 Beam	19	2.039
104	USL Beam 4	Rogue R1 Beam	19	2.058
201	USR Spot 1	Rush MH5 Profile	16	2.080.
202	USR Spot 2	Rush MH5 Profile	16	2.096
203	USL Spot 3	Rush MH5 Profile	16	2.112
204	USL Spot 4	Rush MH5 Profile	16	2.128
301	USR Wash 1	Rogue R1 Wash	19	2.145
302	USR Wash 2	Rogue R1 Wash	19	2.164
303	USL Wash 3	Rogue R1 Wash	19	2.183
304	USL Wash 4	Rogue R1 Wash	19	2.202
401	USR Strobe 1	Protron 3K LED	4	2.225
402	USL Strobe 2	Protron 3K LED	4	2.229
501	SR Side Wash 1	Fuze Wash Z350	19	2.235
502	SL Side Wash 2	Fuze Wash Z350	19	2.254
601	SR Side Profile 1	Fuze Profile CW Standard	26	2.275
602	SL Side Profile 2	Fuze Profile CW Standard	26	2.301
701	DS Leko 1	Ovation E-190WW DOS	2	1.001
702	DS Leko 2	Ovation E-190WW DOS	2	1.003
703	DS Leko 3	Ovation E-190WW DOS	2	1.005
704	DS Leko 4	Ovation E-190WW DOS	2	1.007
705	DS Leko 5	Ovation E-190WW DOS	2	1.009
706	DS Leko 6	Ovation E-190WW DOS	2	1.011

801	DS Frt Wash 1	Colorado Rogue R2X Wash	17	1.015
802	DS Frt Wash 2	Colorado Rogue R2X Wash	17	1.032
803	DS Frt Wash 3	Colorado Rogue R2X Wash	17	1.049
804	DS Frt Wash 4	Colorado Rogue R2X Wash	17	1.066
805	DS Frt Wash 5	Colorado Rogue R2X Wash	17	1.083
806	DS Frt Wash 6	Colorado Rogue R2X Wash	17	1.181
901	DSR Blinder 1	CuePix Blinder WW4	7	1.167
902	DSL Blinder 2	CuePix Blinder WW4	7	1.174
1001	DSC Mirror Ball	Generic Dimmer 16Bit	2	1.110.
2001	DS Mole 1	Colorado 1 Tri Tour TR16 Classic	13	1.115
2002	DS Mole 2	Colorado 1 Tri Tour TR16 Classic	13	1.128
2003	DS Mole 3	Colorado 1 Tri Tour TR16 Classic	13	1.141
2004	DS Mole 4	Colorado 1 Tri Tour TR16 Classic	13	1.154
3001	Hazer	MasterFX Mystic	3	3.510.
4001	Floor PAR 1	Colorado 1 Tri Tour TR16 Classic	13	3.001
4002	Floor PAR 2	Colorado 1 Tri Tour TR16 Classic	13	3.014
5001	Arch Bar 1	Colorband T3 BT	13	3.027
6001	Floor Spot 1	Rush MH5 Profile	16	3.060.
6002	Floor Spot 2	Rush MH5 Profile	16	3.076
10001-10300	LED Pixels	Generic RGB 8Bit	3	69.001 -

## **Local Backline Companies**

- **Auntie M**  
614 S. Date Ave  
Alhambra, CA 91803  
[info@auntiem.com](mailto:info@auntiem.com)  
(626) 308-9774
- **CenterStaging**  
2517 N. Ontario St  
Burbank, CA 91504  
(818) 559-4333
- **LCSR Backline**  
16554 Arminta St  
Van Nuys, CA 91406  
[sales@loncohen.com](mailto:sales@loncohen.com)  
(818) 762-1195
- **SIR**  
6465 Sunset Blvd  
Los Angeles, CA 90028  
[lainfo@sir-usa.com](mailto:lainfo@sir-usa.com)  
(323) 957-5460

### **RE SPECIALITY**

- **Telesonix**  
[info@telesonix.net](mailto:info@telesonix.net)  
(323) 746-3155

## **Local Neighborhood Eats & Drinks: Walkable**

- **Coffee:**  
Civil Coffee  
Santa Canela  
Go Get Em Tiger  
Comet Over Delphi  
Alfred Coffee  
Rosebud Coffee  
Delicias Bakery & Some
- **American:**  
Homestate  
Mendocino Farms  
Triple Beam Pizza  
Folliero's Italian Food & Pizza  
For the Win  
Jeff's Table  
Kitchen Mouse  
Highly Likely  
The Greyhound Bar & Grill
- **Hispanic Food:**  
Villa's Tacos  
Rosty Peruvian Food  
La Fuente Restaurant  
Antigua Bread  
Tacos Sinaloa (Taco Truck)  
Los Aztecas (Taco Truck)  
El Pescador
- **Asian Food:**  
Kuya's Boutique & Cafe  
Ichijiku Sushi  
Yicha  
Mason's Dumplings
- **Bars:**  
Goldline  
La Cueva  
Highland Park Bowl  
Blind Barber  
Arroyo Club  
Good Housekeeping