

A/V Tech Specs

Production Information

STAGE

Size: 24'w x 14'd (34" high)

Stage Wings: SR & SL - 10'x10'

Stage Access: Stage Left

Steel Deck Risers:

- 2x: 4'x6' (8'x6' Drum Riser)
- 1x: 3'x8' (DJ Table)

SOUND

PA:

- Mains: (4x) L'Acoustics ARCS II (2x per-side)
- Center Fill: (1x) L'Acoustics X12 Down Fill Speaker
- Subs: (2x) L'Acoustics SB28 (Under the Center of the Stage, "End Fire" Config)
- FOH Delay System: (2x) L'Acoustics 108P
- System Amplification: (2x) L'Acoustics LA8

FOH:

- Console: Yamaha CL3
- Stage Rack: Rio3224-D (32 in/16 outs/4 AES/EBU outs)

MONITORS:

- Console: Allen & Heath SQ-7
(MON Engineer on a Show-by-Show Basis; Pending Ticket Sales)
- Monitors: (6x) L'Acoustics X15-HiQ
(2x) L'Acoustics 112p (Powered Wedges)
- System Amplification: (3x) L'Acoustics LA4X
- Splitter: 32-Channel Analog Split

GUEST CONSOLES: If bringing in your own console, our guest position is located back left of house. Unfortunately, we cannot move this position since our bar takes up "FOH position". Our tie-lines into the PA are as follows...

- AES (L/R) (This is nonnegotiable in turning this into 2 separate lines)
- Center Fill
- Subs
- If your console does not have AES capabilities, we will need to run your console into our house desk.
- 1x: Shielded Cat5e available and dropped upstage right
- *Monitor Guest Consoles:* Please advance. We may be able to set up your world in either SR or SL; pending advance.

MULTITRACK RECORDING: We can offer multitrack recording for \$150. This amount will be deducted from settlement. If you would like to bypass this fee, you must bring in the following...

- Recording personnel w/ computer & DAW of choice
- Dante Virtual Soundcard & Dante Controller (Download [HERE](#))
- Dongle with ethernet connection

Production Information Continued

MICROPHONES

Shure:

- 4x: SM57
- 8x: SM58
- 1x: SM58s
- 4x: SM81
- 2x: SM27
- 3x: Beta52A
- 1x: Beta 91A
- 4x: Beta57A
- 4x: Beta58A

Sennheiser:

- 2x: e609
- 5x: e604
- 2x: MD421-II

Audix:

- 1x: D6
- 1x: i5
- 1x: D4
- 2x: D2
- 3x: ADX51

sE Electronics:

- 2x: V7

Telefunken:

- 2x: M80

Radial ProDI Boxes:

- 2x: J48
- 1x: JDI Stereo
- 1x: ProD2 Stereo
- 2x: Pro AV2 Stereo
- 4x: ProDI Mono

RF/Wireless

Shure:

- ULXD4D (G50: 470-534 MHz)
- 2x: ULXD2 Handhelds w/ SM58 Capsules

DJ GEAR

- 2x: Technics 1200MK7
- 2x: Pioneer CDJ2000 NXS2
- 1x: Pioneer DJM-900 NXS2

LIGHTING

FOH:

- Console: GrandMA2 PC Version w/ Fader Command Wing
- Computer: ACT Cybernet All-In-One PC

INSTRUMENTS:

Elation:

- 2x: Proton 3K | 900 Watt LED Strobe
- 2x: CuePix Blinder WW4
- 2x: Fuze Profile CW
- 2x: Fuze Wash Z350

Martin:

- 6x: Rush MH5 Profile

Chauvet:

- 4x: Rogue R1 Beam
- 4x: Rogue R1 Wash
- 6x: Ovation E-190WW-26 Degree Lekos
- 14x: COLORado TriTour

MasterFX:

- 1x: Mystic Haze Machine (No Fee)

GUEST CONSOLES:

- If bringing in your own console, our guest position is located back left of house.
- 3x: DMX Guest Lines for the Universes

No Fog, Smoke, or CO2 Tanks

Additional Fees May Apply for Fog/Smoke Machines

Production Information Continued

VIDEO

PROJECTOR:

- Barco G100-W16: 16K Lumen Projector
(1920x1200 – 16:10)
- 3x: HDMI Drops
 - o 1x: FOH
 - o 2x: Stage (SR)
(Stage drops are as follows: 1x HDMI [4k], 1x SDI [1080p])
- Screen:
 - o Motorized Projector Screen: 147.5" x 236"
(278" Diagonal – 16:10)

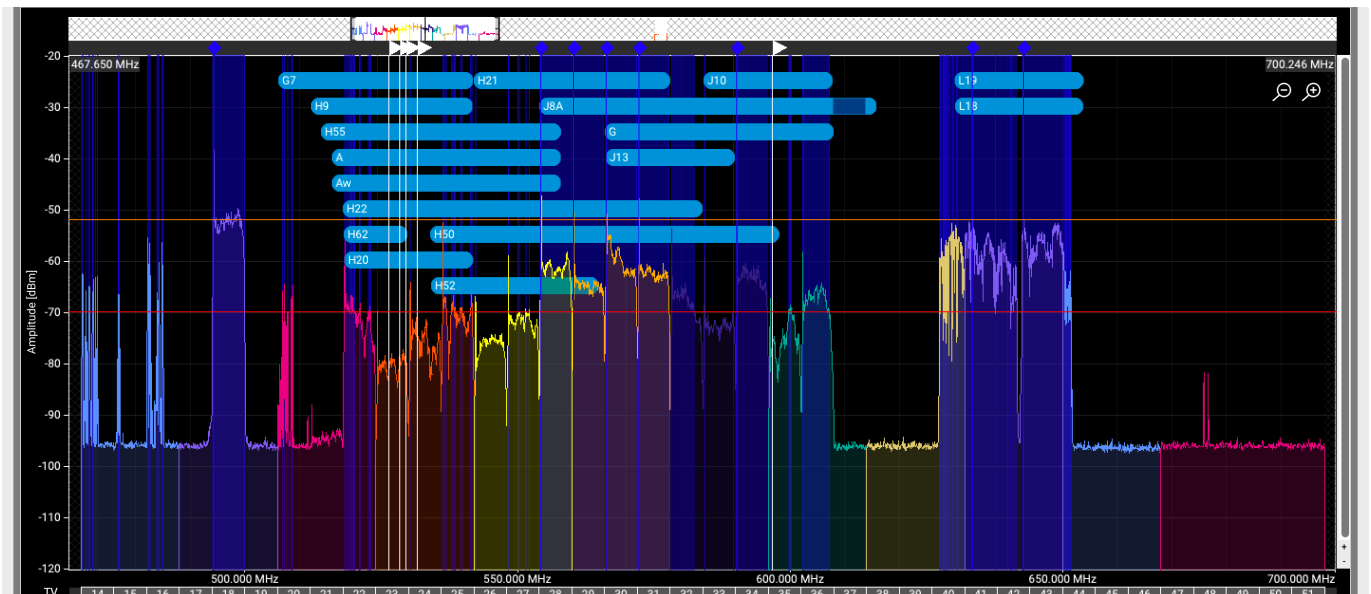
***RIGGING:** No points available, no weight may be added to existing trussing. All visiting production must be ground supported.

***POWER:** There is no additional power tie-in (3 phase etc.). Lighting power is shared with audio. If your ground package requires more power, a generator rental will be needed.
Please advance ASAP.

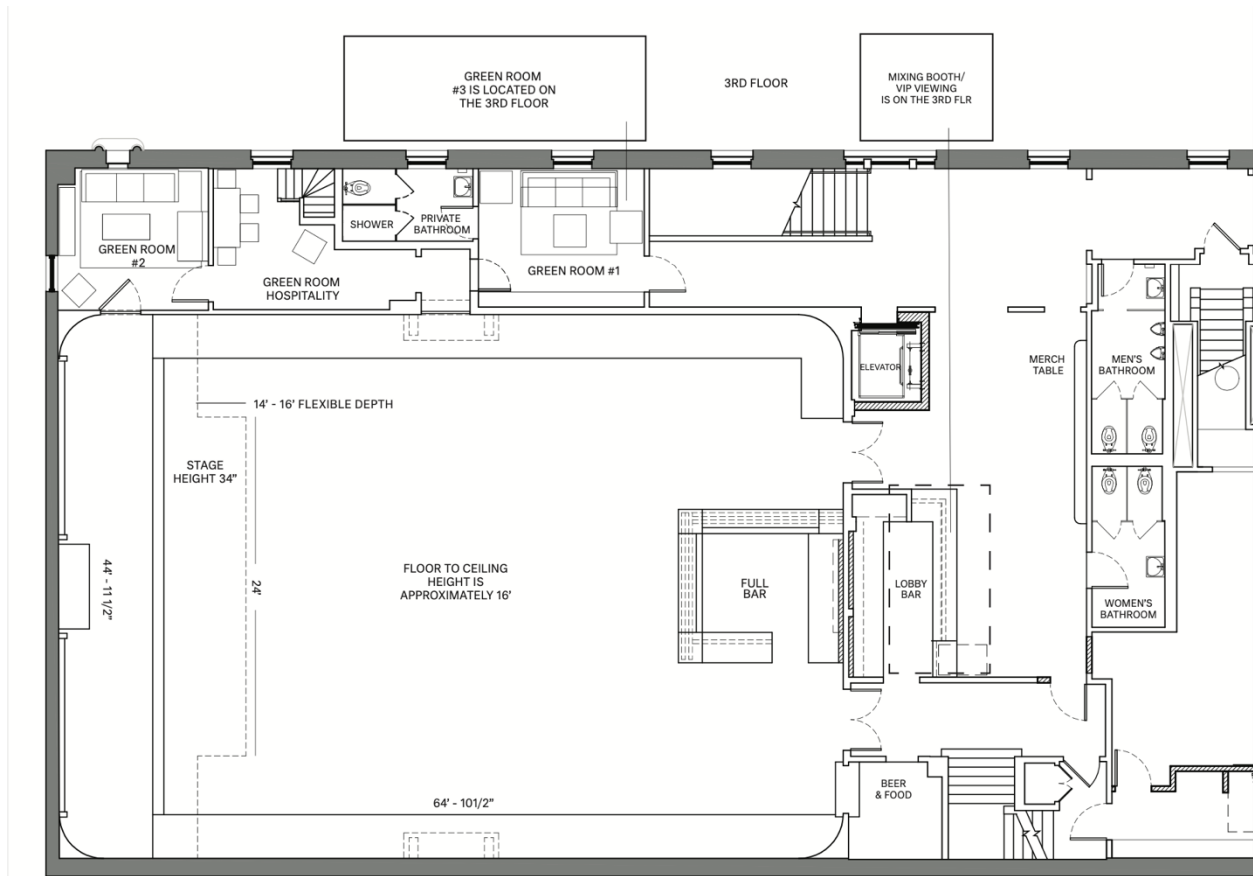
No follow spots or fly systems

RF Information

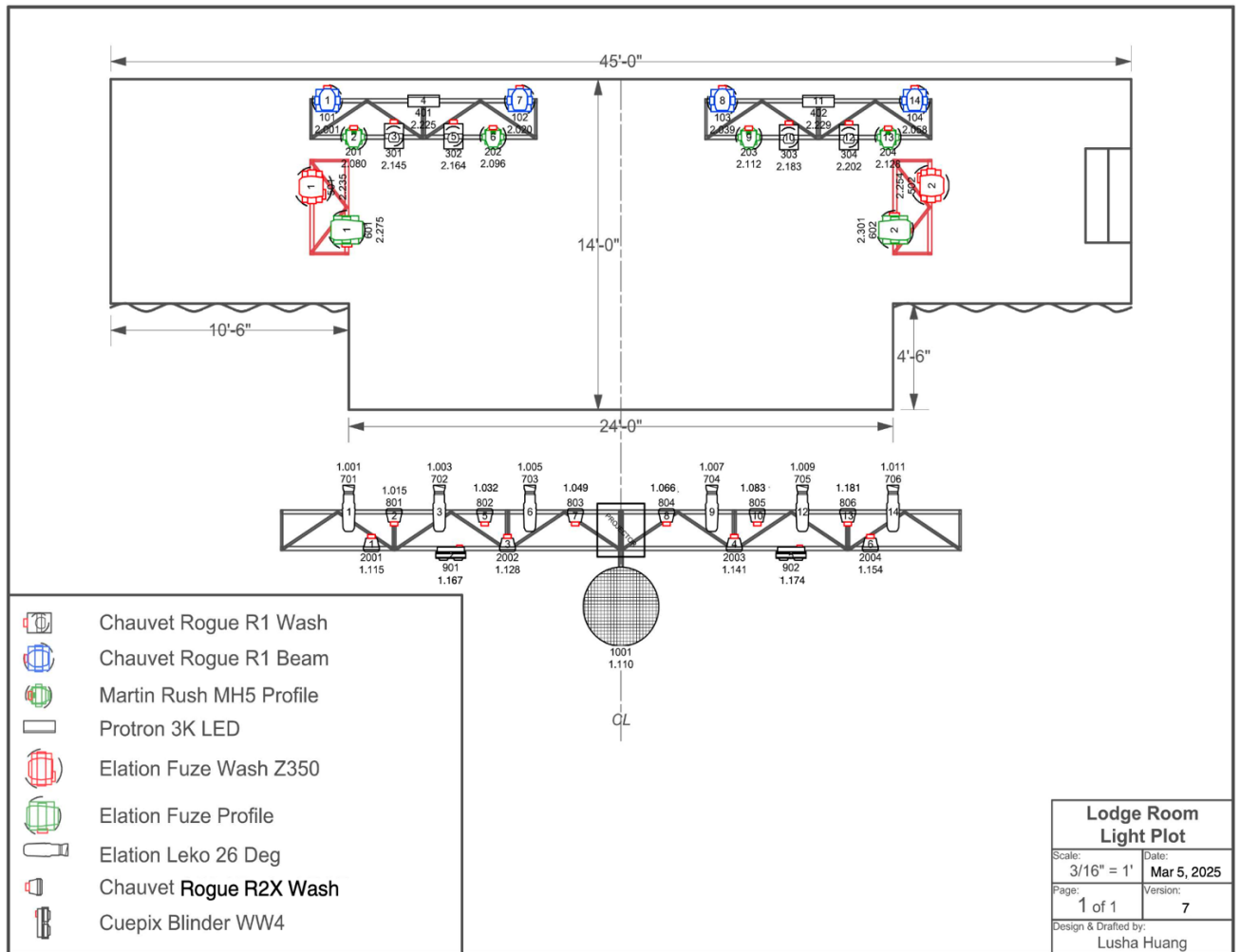
- If bringing in IEMs/RF, the following frequency bands do not work properly in our area: *(Please send frequency bands ASAP)*
 - Shure:
 - PSM300: H62, H20, L19, L18, J13, J10
 - PSM900: G7 (spotty), H21
 - PSM1000: H22, J8A
 - ULXD (mics): H50, H52
 - SLXD/BLX (mics): H55, H9
 - Sennheiser:
 - G4: G, B, A (spotty)
 - SR2050: Aw (spotty)
- We must source/rent the proper frequency if any of your RF equipment lands in the above bands. Below is a scan with all the problematic frequency ranges.



Floor Plan:



LIGHTING PLOT:



LIGHTING PATCH:

FixID	Position	Fixture Type	Footprint	Patch
101	USR Beam 1	Rogue R1 Beam	19	2.001
102	USR Beam 2	Rogue R1 Beam	19	2.020.
103	USL Beam 3	Rogue R1 Beam	19	2.039
104	USL Beam 4	Rogue R1 Beam	19	2.058
201	USR Spot 1	Rush MH5 Profile	16	2.080.
202	USR Spot 2	Rush MH5 Profile	16	2.096
203	USL Spot 3	Rush MH5 Profile	16	2.112
204	USL Spot 4	Rush MH5 Profile	16	2.128
301	USR Wash 1	Rogue R1 Wash	19	2.145
302	USR Wash 2	Rogue R1 Wash	19	2.164
303	USL Wash 3	Rogue R1 Wash	19	2.183
304	USL Wash 4	Rogue R1 Wash	19	2.202
401	USR Strobe 1	Protron 3K LED	4	2.225
402	USL Strobe 2	Protron 3K LED	4	2.229
501	SR Side Wash 1	Fuze Wash Z350	19	2.235
502	SL Side Wash 2	Fuze Wash Z350	19	2.254
601	SR Side Profile 1	Fuze Profile CW Standard	26	2.275
602	SL Side Profile 2	Fuze Profile CW Standard	26	2.301
701	DS Leko 1	Ovation E-190WW DOS	2	1.001
702	DS Leko 2	Ovation E-190WW DOS	2	1.003
703	DS Leko 3	Ovation E-190WW DOS	2	1.005
704	DS Leko 4	Ovation E-190WW DOS	2	1.007
705	DS Leko 5	Ovation E-190WW DOS	2	1.009
706	DS Leko 6	Ovation E-190WW DOS	2	1.011

801	DS Frt Wash 1	Colorado Rogue R2X Wash	17	1.015
802	DS Frt Wash 2	Colorado Rogue R2X Wash	17	1.032
803	DS Frt Wash 3	Colorado Rogue R2X Wash	17	1.049
804	DS Frt Wash 4	Colorado Rogue R2X Wash	17	1.066
805	DS Frt Wash 5	Colorado Rogue R2X Wash	17	1.083
806	DS Frt Wash 6	Colorado Rogue R2X Wash	17	1.181
901	DSR Blinder 1	CuePix Blinder WW4	7	1.167
902	DSL Blinder 2	CuePix Blinder WW4	7	1.174
1001	DSC Mirror Ball	Generic Dimmer 16Bit	2	1.110.
2001	DS Mole 1	Colorado 1 Tri Tour TR16 Classic	13	1.115
2002	DS Mole 2	Colorado 1 Tri Tour TR16 Classic	13	1.128
2003	DS Mole 3	Colorado 1 Tri Tour TR16 Classic	13	1.141
2004	DS Mole 4	Colorado 1 Tri Tour TR16 Classic	13	1.154
3001	Hazer	MasterFX Mystic	3	3.510.
4001	Floor PAR 1	Colorado 1 Tri Tour TR16 Classic	13	3.001
4002	Floor PAR 2	Colorado 1 Tri Tour TR16 Classic	13	3.014
5001	Arch Bar 1	Colorband T3 BT	13	3.027
6001	Floor Spot 1	Rush MH5 Profile	16	3.060.
6002	Floor Spot 2	Rush MH5 Profile	16	3.076
10001-10300	LED Pixels	Generic RGB 8Bit	3	69.001 -